

PUNJAB HUMAN CAPITAL INVESTMENT PROJECT

# Health Component

Primary and Secondary Healthcare Department

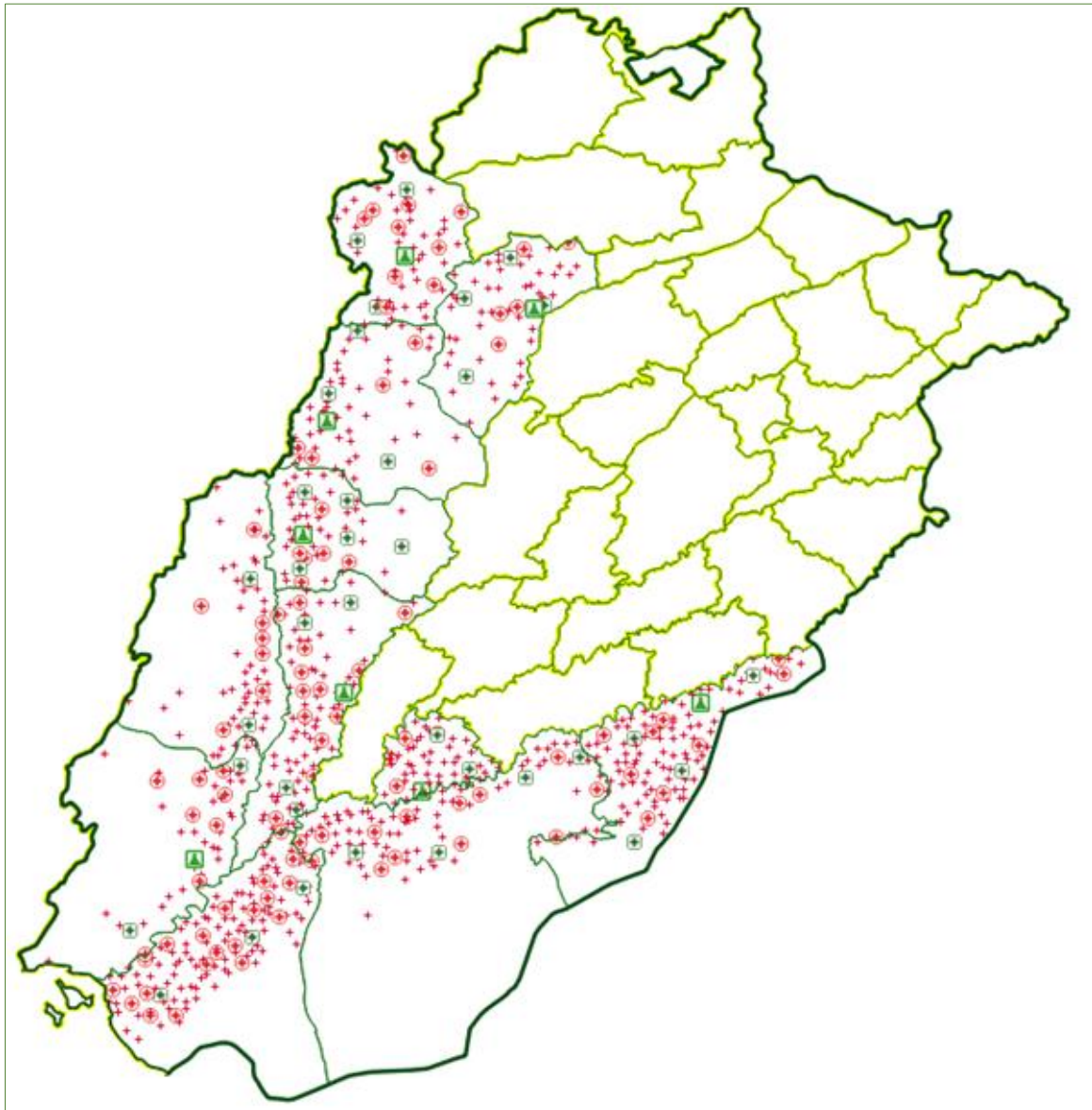


Figure 1 : Map of Project District & Health Facilities



## Table of Contents

<b>1</b>	<b>Progress on Beneficiary entries on EMR</b> .....	<b>3</b>
1.1	Registrations on EMR .....	3
1.1.1	Beneficiary Registrations.....	3
1.1.2	Total Patient Registrations.....	4
1.2	ANC Visits on EMR .....	5
1.2.1	Beneficiary ANC Visits .....	5
1.2.2	Total ANC Visits .....	6
1.3	Deliveries on EMR.....	6
1.3.1	Beneficiary deliveries on EMR.....	6
1.3.2	Total Deliveries on EMR .....	7
1.4	Child Immunization.....	8
1.4.1	Beneficiary Child Immunization.....	8
1.4.2	Overall Child Immunization .....	9



# 1 Progress on Beneficiary entries on EMR

The snapshot of the Beneficiary entries in the EMR of the major categories is given below. EMR entries have shown a drastic increase in each and every aspect. This can be attributed to active training and continuous support provided by PMIU health component.

## Summary of beneficiaries entries from Jan-Jun 2022



Further analysis of these categories and their progress is also mapped out in this section.

## 1.1 Registrations on EMR

### 1.1.1 Beneficiary Registrations

This metric shows the total new wallets that are created on the EMR application. It includes all unique CNICs that are registered on EMR and tagged with a beneficiary pregnant or lactating mother.

District	July-Dec 2021	Jan-June 2022	% Change
Bahawalpur	847	5,312	627%
Bhakkar	73	3,667	5,023%
DG Khan	124	7,349	5,927%
Mianwali	57	1,319	2,314%
Muzaffargarh	2,500	17,620	705%
Rahim Yar Khan	318	5,359	1,685%
Rajanpur	232	3,931	1,694%
<b>Total</b>	<b>4,151</b>	<b>44,557</b>	<b>1,073%</b>

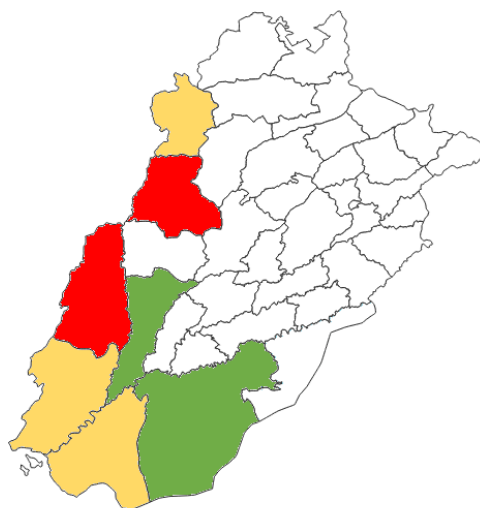


Table 1 : Beneficiary Registration on EMR

In summary, **the beneficiary registrations on EMR increased by an average of 1073%**. is social mobilization campaign by the PHCIP Health Component had a successful response rate



among the beneficiary population. Again, as with other cases a huge percentage increase is due to the fact that generally new wallets created on EMR were very low in districts such as Bhakkar and Mianwali in 2021.

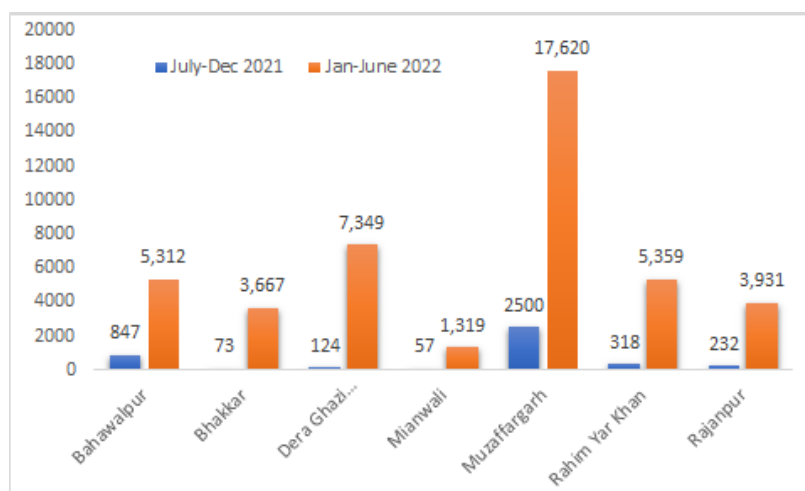


Figure 2: Beneficiary Registration on EMR

### 1.1.2 Total Patient Registrations

District	July-Dec 2021	Jan-June 2022	Percentage Change
Bahawalpur	9,458	36,355	384%
Bhakkar	8,459	33,402	395%
DG Khan	10,735	47,565	443%
Mianwali	6,411	23,354	364%
Muzaffargarh	21,164	91,780	434%
Rahim Yar Khan	22,452	54,312	242%
RajanPur	8,643	22,026	255%
<b>Total for 7 Districts</b>	<b>53,694</b>	<b>308,794</b>	<b>575%</b>

Table 2: Overall Registration on EMR

This table shows the total new patients that are registered on EMR. It is another metric that helps us judge EMR performance. This is proof of readiness of health facilities. Massive increase in beneficiaries load has been absorbed and served well by health facilities. In summary, the total registrations **increased five-fold by 575%**. A lot of this is due to increased registrations of beneficiaries and improvement of the capacities of health facilities to use the EMR application.



## 1.2 ANC Visits on EMR

### 1.2.1 Beneficiary ANC Visits

Ante Natal Care visits for pregnant beneficiary mothers in 7 districts **have increased by an average of 856%**

District	Jul-Dec 21	Jan-Jun 22	% Change
Bahawalpur	909	4,290	472%
Bhakkar	76	3,439	4,525%
Dera Ghazi Khan	124	5,888	4,748%
Mianwali	61	1,258	2062%
Muzaffargarh	2,713	14,137	521%
Rahim Yar Khan	334	5,084	1,522%
Rajapur	227	3,619	1,594%
<b>Total</b>	<b>4,404</b>	<b>37,715</b>	<b>856%</b>

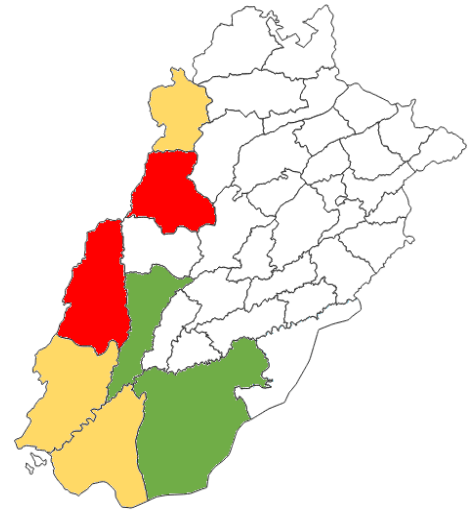


Table 3 : Beneficiary ANC Visits on EMR

Each district showed a marked increase, with districts of phase 1 showing average of 28x improvement in beneficiary ANC visits. This is mostly associated to improve beneficiary uptake caused by social mobilization and SMS campaign launched by health department in February 2022. However, as seen in the table above, a lot of this percentage increase is also due to abnormally low absolute values in 2021.

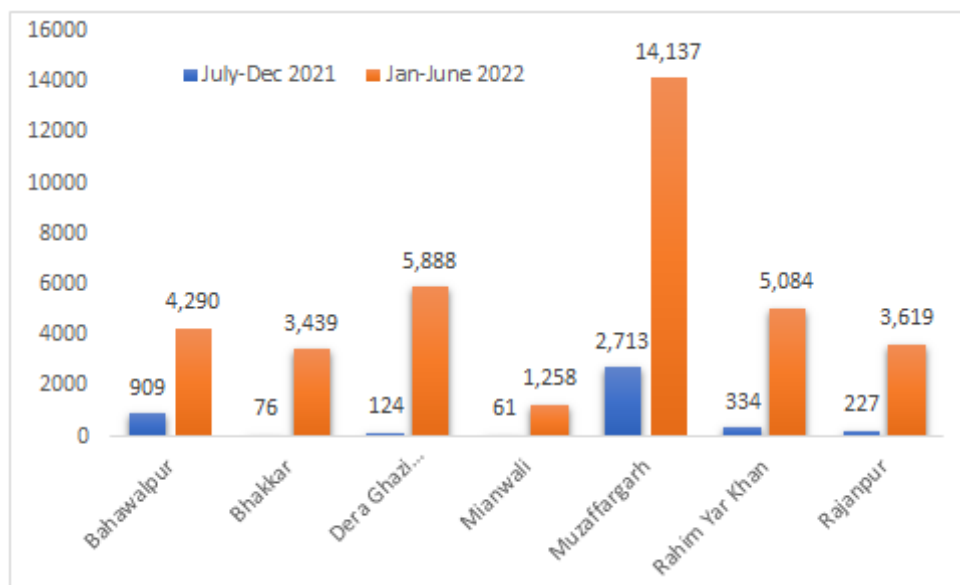


Figure 3 Beneficiary ANC Visits on EMR



The beneficiary ANC visits in 2022 were still only 31% of total ANC visits in the same period. Hence, the percentage increase should not detract us from the fact that there is still huge potential to improve in terms of possible beneficiary ANC visits.

### 1.2.2 Total ANC Visits

District	July-Dec 2021	Jan-June 2022	Percentage Change
Bahawalpur	6,116	17,495	286%
Bhakkar	5,012	9972	199%
Dera Ghazi Khan	3,683	14,300	388%
Mianwali	3,573	10,328	289%
Muzaffargarh	14,501	31642	218%
Rahim Yar Khan	17,142	28,212	165%
Rajanpur	3,448	7,968	231%
<b>Total for 7 Districts</b>	<b>53,475</b>	<b>119,917</b>	<b>224%</b>

Table 4: Total ANC Visits on EMR

The reason to monitor total ANC entries is to ascertain general EMR compliance since it is the Departments goal to shift all data entries gradually to EMR. This metric also helps us track IRI 7 as a proxy, which measures total ANC-1 visits. As per the data above, average **increase in entries for all 7 districts was 224%**.

## 1.3 Deliveries on EMR

### 1.3.1 Beneficiary deliveries on EMR

District	July-Dec 2021	Jan-June 2022	% Change
Bahawalpur	160	666	416%
Bhakkar	19	223	1,174%
Dera Ghazi Khan	42	641	1,526%
Mianwali	9	137	1,522%
Muzaffargarh	410	1,202	293%
Rahim Yar Khan	83	489	589%
Rajanpur	76	526	692%
<b>Total for 7 Districts</b>	<b>799</b>	<b>3,884</b>	<b>486%</b>

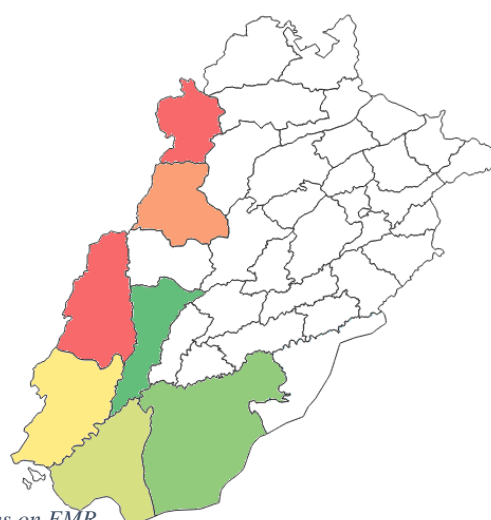


Table 5: Beneficiary Deliveries on EMR

One of the project's key objectives is to increase deliveries under Skilled Birth Attendants. This section briefs on the current status, and progress in delivery entries on the EMR from the



previous quarter in the 7 districts. In summary, **beneficiary delivery entries increased by an average of 486%**. Detailed graphs are snapped below.

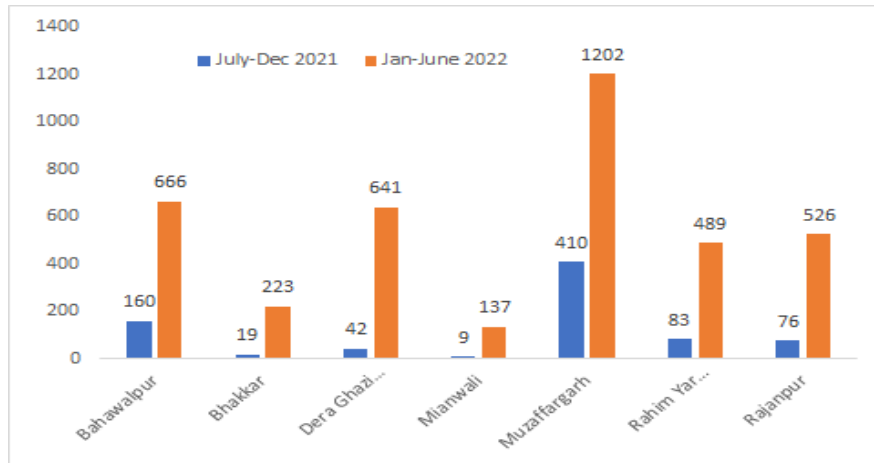


Figure 4: Beneficiary Deliveries on EMR

However, similar to the case of beneficiary ANCs a lot of these high percentages are due to very low beneficiary delivery entries in 2021. For instance, the districts of Bhakkar and Mianwali recorded 19 and 9 deliveries respectively in the last three months of 2021. This metric directly affects the first PDO of this project, and hence is top priority for us to monitor.

### 1.3.2 Total Deliveries on EMR

District	July-Dec 2021	Jan-June 2022	Percentage Change
Bahawalpur	1,474	4,856	329%
Bhakkar	1,686	2,549	151%
Dera Ghazi Khan	2,598	5,462	210%
Mianwali	895	2,226	249%
Muzaffargarh	6,013	7,936	132%
Rahim Yar Khan	5,973	8,205	137%
Rajanpur	1,748	3,187	182%
<b>Total for 7 Districts</b>	<b>20,387</b>	<b>34,421</b>	<b>169%</b>

Table 6 : Total Deliveries entered on EMR

The metric of total delivery entries shows us the general compliance on EMR. As seen above, although the entries for beneficiaries increased exponentially, the total delivery entries did not show that level of increase. The overall deliveries entered on EMR **increased by an average of 38%**. Possible reasons for this can be the following:



- Due to high patient load, after recent awareness campaign LHVs can only enter beneficiary entries.
- Generally, there is a perception that EMR is only for beneficiary entries
- Non-beneficiaries that are not incentivized for delivery at government health facility opt for other options (private or NGO run health facilities)

## 1.4 Child Immunization

### 1.4.1 Beneficiary Child Immunization

Child immunization for BISP household has improved from 620 to 5,296 registering an increase of 854%.

District	July-Dec 2021	Jan-June 2022	% Change
Bahawalpur	90	857	952%
Bhakkar	15	217	1,447%
Dera Ghazi Khan	116	784	676%
Mianwali	9	148	1,644%
Muzaffargarh	298	2,535	851%
Rahim Yar Khan	74	565	764%
Rajanpur	18	190	1,056%
<b>Total</b>	<b>620</b>	<b>5,296</b>	<b>854%</b>

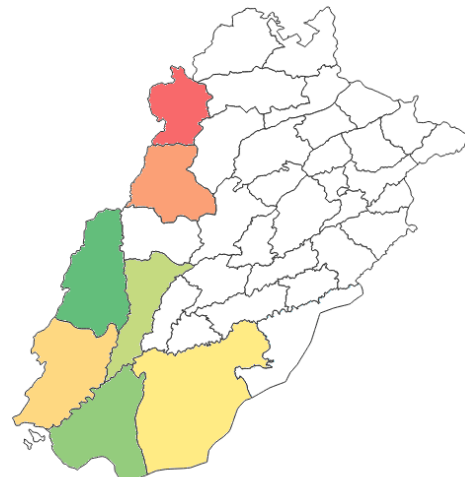


Table 7 : Beneficiary Child Immunization on EMR



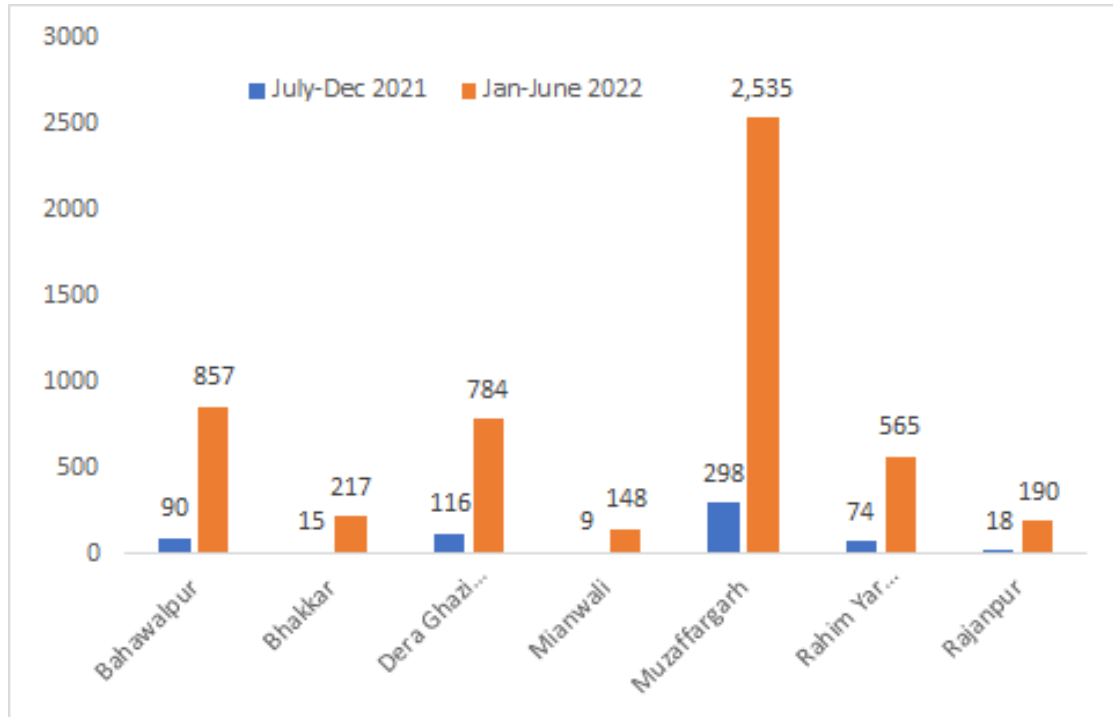


Table 8 : Beneficiary Child Immunization on EMR

#### 1.4.2 Overall Child Immunization

Overall child immunization has registered an increase of 962% during current period i.e., Jan-Jun 2022 as compared to Jul-Dec 2021 period. This can be attributed to active training and support by PMIU health component.

District	July-Dec 2021	Jan-June 2022	Percentage Change
Bahawalpur	156	1,396	895%
Bhakkar	17	410	2412%
Dera Ghazi Khan	136	1,123	826%
Mianwali	23	314	1365%
Muzaffargarh	538	4,994	928%
Rahim Yar Khan	92	965	1049%
Rajanpur	21	251	1195%
<b>Total</b>	<b>983</b>	<b>9,453</b>	<b>962%</b>

Table 9 : Overall Child Immunization entered on EMR